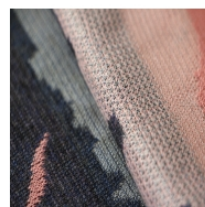
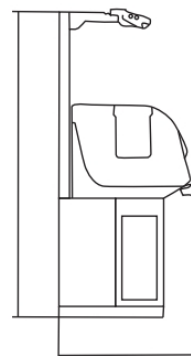
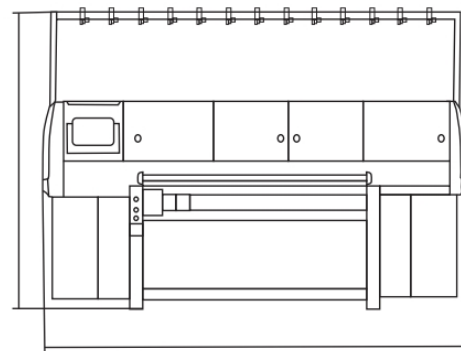


# TX252S/TX352S

该机型集成了高速高效、动态密度目、快速回转，高性能伺服控制等多种高新技术。具有双向收针，连续编织等功能。粗针型采用双罗拉马达牵拉保证充足且稳定的牵拉力。

The model integrates various high and new technologies such as high-speed small carriage, dynamic density control function, fast return technology, two-way stitch decreasing and continuous knitting innovative technology. Course Gauge use two roller motor to ensure stable drawing tension, make the fabric drawing more smoothly, and reliable.

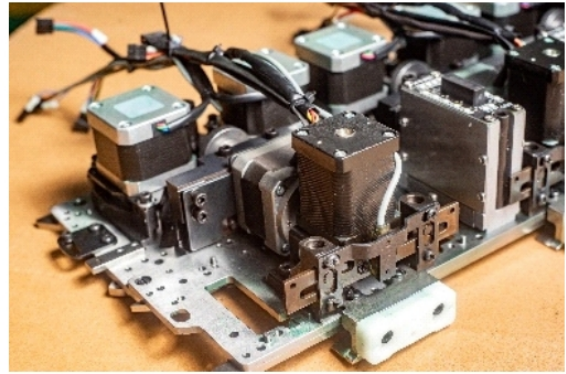


机器型号 Machine Model	外形尺寸 (mm) Boundary dimension (mm) 长x宽x高 Length*Width*Height(mm)	包装尺寸 (mm) Packing dimension (mm)	净重 (Kg) Net weight (kg)	毛重 (kg) Gross weight (kg)
TX252S	2850*1000*1750	2870*1050*1850	1000	1150
TX352S	2850*1000*1750	2870*1050*1850	1050	1200
TX380S	4150*1150*1750	4200*1150*1850	1600	1850
TX380ST	4150*1150*1750	4200*1150*1850	1650	1900



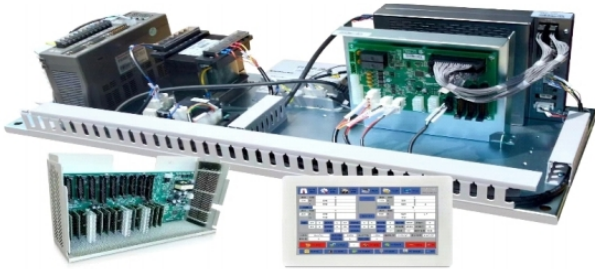
高位双罗拉马达牵拉，满足厚重织物对牵拉要求

Equipped with high-position double motor roller, to meet the requirements of heavy fabric for drawing

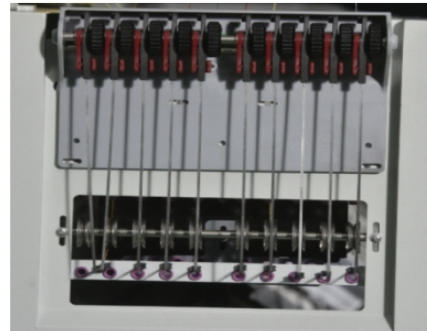


配置小机头及推针电机结构山板，有效缩短机头回转行程，功能更加稳定

Equipped with smaller machine head and motor driven camplate, greatly reduce the carriage returning distance, function is more stable and effective



系统具有更好的稳定性、兼容性、安全性及更好的人机界面操作性The system has better stability, compatibility, security and better man-machine interface operation



配备张力可调节式侧天线组件，1-6档位根据编织需求调节，更精确满足张力需求

Equipped with tension-adjustable side tension assembly, 1-6 position could be adjusted according to knitting requirements to more accurately meet tension requirements



定时、定量的自动加油设备（选配）

Timing and quantitative automatic refueling equipment (optional)



可旋转拉伸式操作屏幕，方便操作

Rotary stretchable operation screen, better man-machine operation experience and easy to operate

## 产品参数

型号	TX252S TX352S TX280T TX380T etc
针距	3G 3.5G 5G 5/7G 7G 8G 9G 10G 12G 14G 16G 18G 20G
编织幅宽	52inch 56inch 60inch 72inch 80inch 100inch
编织系统	双系统, 三系统 2+2系统3+3系统
编织速度	根据织物组织设定, 最高速度1.4m/s
沉降片	步进电机驱动, 可根据不同织物进行调整
自动停车装置	断纱、纱结、卷布、撞针、件数完成、超负荷、指定行停车、程序错误等
编织系统:	采用电机换向, 机头回转更快, 编织效率高, 稳定性好, 小机头“三功位”具有双向收针、动态度目等全功能
换色系统:	4条天杠导轨, 16把单孔及双孔纱嘴
牵拉系统:	高位罗拉, 粗针型“双罗拉马达”(选配)
操作系统:	10.4寸触摸显示屏 支持多语言
软件程序:	睿能系统
安全装置	全机覆盖降低噪音和防尘的护盖, 红外线停车感应, 紧急停车, 电源切断装置
电源:	AC220V/380V 50Hz/60Hz, 功率: 1.2KW 双系统) 1.5KW-2KW (三系统)

## TECHNICAL PARAMETERS

Model	TX252S TX352S TX280T TX380T
Gauge:	3G 3.5G 5G 5/7G 7G 8G 9G 10G 12G 14G 16G 18G 20G
Knitting width:	52inch 56inch 60inch 72inch 80inch 100inch
System:	Double system, three system 2+2 System 3+3system
Knitting speed:	Maximum speed 1.4m/s.
Sinker	Step motor driven,adjustable
Auto stop	Yarn break,program error ,systemic malfuntion
Cam system:	Adopts'the motor driven cam direction -changing system'improve knitting speed and stability. And use smaller cam plate "Three position" knitting technology can simultaneously present "knitting", "tuck", "partial floating " and other stitching methods
Yarn Feeding system:	4 pcs yarn rail,16pcs single hole and double hole yarn feeder.
Comb taking-down system:	Adopts latest own developed non-waste comb, effectively solve the knitting problem caused by insufficient drawing force, while saving setup yarn usage
Operating system:	Using 10.4-inch LED display, graphical interface, USB transmission mode, support multi-language
Soft ware :	Raynen system
Saftey device	Emergey stop switch,shield cover infrared ray,power cut-off
Power:	AC220V/380V 50Hz/60Hz, Power Consumption: 1.2KW (two system) 1.5KW-2KW (three system)

由于产品不断更新, 所以未必能及时告知信息, 请向本公司咨询

Because the product is constantly updated, so may not be able to inform the information in time, please consult the company