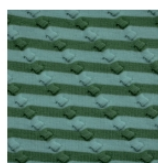
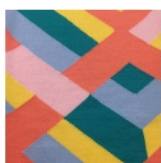
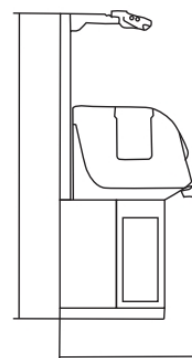
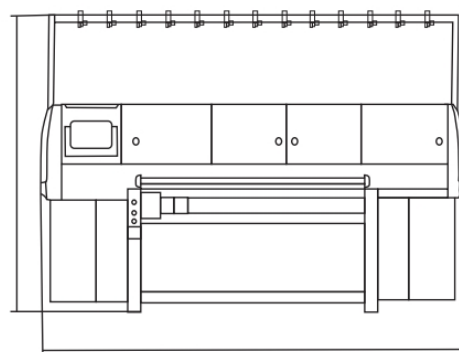


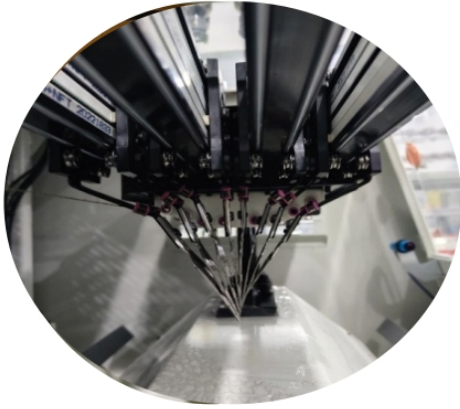
TAF252/TAF352

标准配置16把智能智跑纱嘴，纱嘴移动由伺服电机驱动。可以精确地实现嵌花和局部提花等针织物的编织、减少机头空跑行程，提高编织效率。采用最新的创新专利技术，最多可编织16种颜色的嵌花结构。电机控制推针山板结构，缩短了机头回转距离，运行更快更稳定。

Equipped with standard 16pcs auto motor-driven feeders, the movement of which is controlled by servo motor. This could precisely realize the knitting of intarsia, inverse plating and reduce running course, to improve knitting efficiency. It is the latest innovative proprietary technology, 16colors Intarsia Structure Can Be Made Maximumly. The Cam System Utilizes Motor-Controlled Needle Raising Structure, Carriage Effective Movement Distance Is Shortened, Carriage Return Become Faster and More Stable

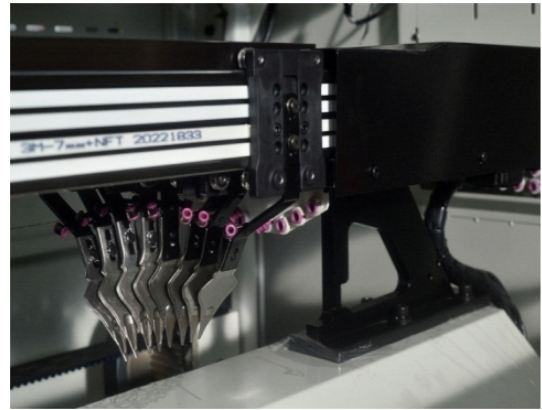


机器型号 Machine Model	外形尺寸 (mm) Boundary dimension (mm) 长x宽x高 Length*Width*Height(mm)	包装尺寸 (mm) Packing dimension (mm)	净重 (Kg) Net weight (kg)	毛重 (kg) Gross weight (kg)
TAF252S	2800*1000*1750	2870*1050*1850	950	1100
TAF352S	2850*1000*1750	2870*1050*1850	980	1130
TAF252SC	2850*1000*1750	2870*1050*1850	1000	1150
TAF352SC	2850*1000*1750	2870*1050*1850	1050	1200



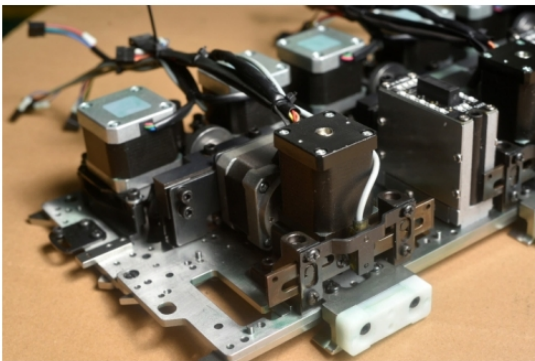
自主设计的智跑式天杠导轨，间隔空间大，便于操作人员维修、调试等操作

The self-designed intelligent feeder guide rail has a large spacing, which is convenient for operators to maintain and debug

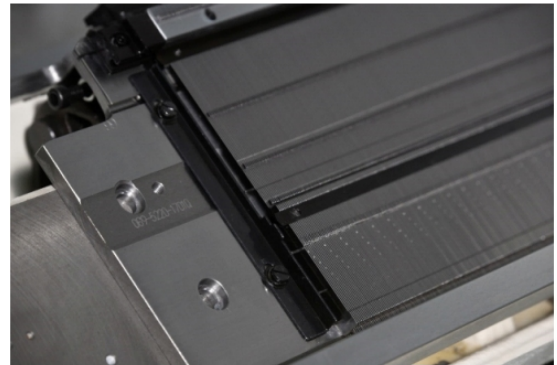


标准配置16把智能纱嘴，纱嘴移动由伺服电机驱动

Equipped with standard 16pcs auto motor-driven feeders, the movement of which is controlled by servo motor. This could precisely realize the knitting of intarsia, inverse plating and reduce running course



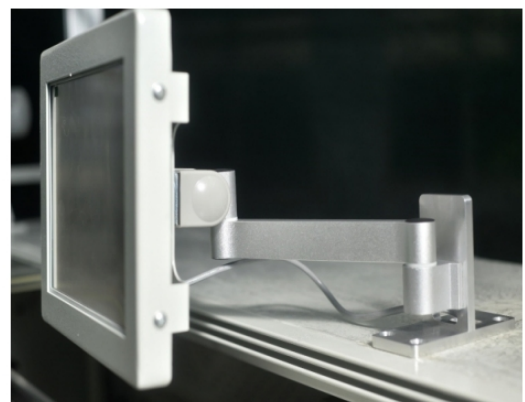
推针电机结构，有效缩短机头回转行程，功能更加稳定
Raising cam is controlled by motor • greatly reduce the carriage returning distance • function is more stable and effective



高精度的插片式针板结构，普通机型针距可至20G
High precision insert type customized needle bed, fine gauge range could reach 20G



选配优质储纱装置，纱线张力控制更加均匀，断纱报警更加灵敏
high-quality yarn storage device, yarn tension control is more uniform, yarn breaking alarm is more sensitive



可旋转拉伸式操作屏幕，方编操作
Rotary stretchable operation screen, better man-machine operation experience and easy to operate

产品参数

型号	TAF252/ TAF352
针距	3G 3.5G 5G 5/7G 7G 9G 10G 12G 14G 16G 18G 20G
编织幅宽	52inch、66inch、72inch、80inch,etc
编织速度	最高速度 1.2-1.4m/s
显示	10.4inch触摸屏，支持多语言
换色系统	4条天杠，16把智跑纱嘴
摇床机构	伺服电机控制，最大摇床左右2英寸
牵拉机构	高位步进电机，起底板结构（选配）
报警装置	断纱，纱节，程序错误报警，防护装置报警，机头保护报警灯
主界面	人机交互界面，支持USB数据传输和网络传输
电源	Ac 220v/380v 频率:50/60hz 功率:1.5-2kw

TECHNICAL PARAMETERS

Model	TAF252/ TAF352
Machine gauge	3G 3.5G 5G 5/7G 7G 9G 10G 12G 14G 16G 18G 20G
Knitting width	52inch、66inch、72inch、80inch,etc
Knitting speed	Maximum 1.2-1.4m/s
Display	10.4inch touch screen, support multiple language
Feeder alternation	4pcs feeder rail,8+8 auto running feeder
Racking function	Controlled by servo motor, maximum L+R movement up to 2inch
Drawing device	Stepper motor controlled, high-position roller, special sinker and comb device(optional)
Alarm device	Yarn breakage, big knot, racking failure, programming error
Main interface	Graphical interfaces, easy operation, compatible with USB and network
Power	AC 220v/380v frequency: 50/60hz power consumption: 1.5-2kw

由于产品不断更新，所以未必能及时告知信息，请向本公司咨询

Because the product is constantly updated, so may not be able to inform the information in time, please consult the company